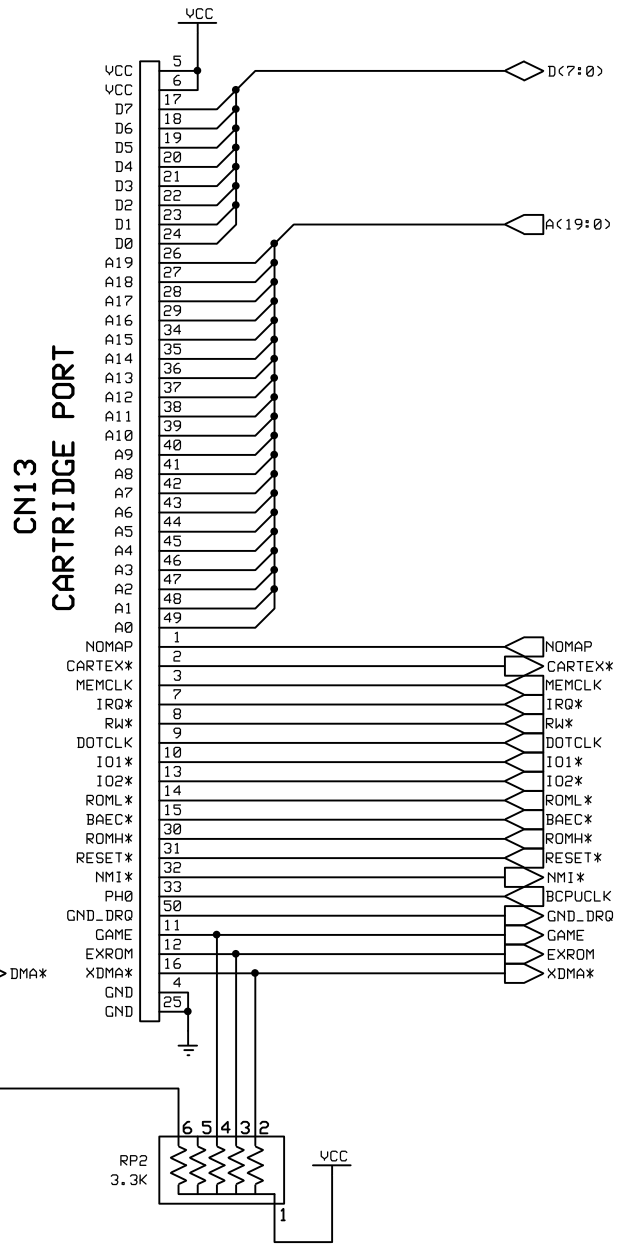
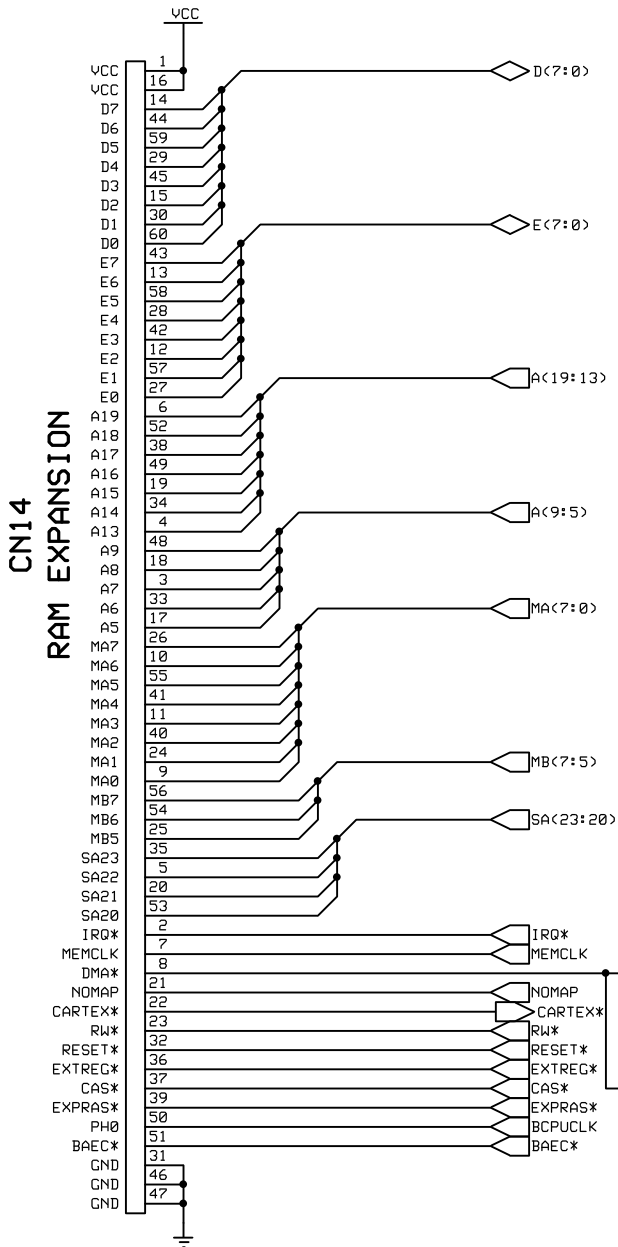
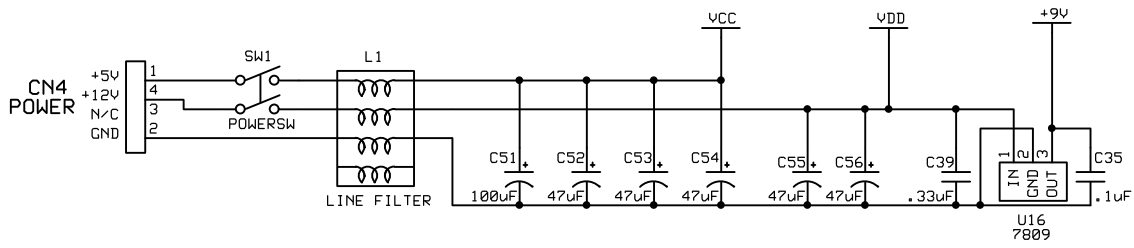


Commodore 65		
Floppy Disk and PAL		
Wayne Sander	Rev 2A 2/17/2014	Page #5 of 7



Commodore 65		
Power and Expansion		
Wayne Sander	Rev 2A	Page #6 of 7
	2/17/2014	

PAL16L8BCN

Chip diagram (DIP)

A5	1	20	VCC
A7	2	19	CSLO
LED	3	18	CSHI
A17	4	17	CARTEX
A18	5	16	NC
A19	6	15	ROMEN
PH0	7	14	EXPAND
FDCCS	8	13	FLOPLED
ROM	9	12	EXTREG
GND	10	11	CS1

PAL16L8BCN

Pin Descriptions

Pin	Label	Type
1	A5	pos,com input
2	A7	pos,com input
3	LED	pos,com input
4	A17	pos,com input
5	A18	pos,com input
6	A19	pos,com input
7	PH0	pos,com input
8	FDCCS	unused
9	ROM	pos,com input
10	GND	ground pin
11	CS1	pos,com input
12	EXTREG	neg,com output
13	FLOPLED	neg,com output
14	EXPAND	neg,com output
15	ROMEN	neg,com output
16	NC	unused
17	CARTEX	pos,com input
18	CSHI	neg,com output
19	CSLO	neg,com output
20	VCC	power pin

PAL Equations

; C65 Revision 2A ELMER PAL.

chip ELMER PAL16L8

A5=1 A7=2 LED=3 A17=4 A18=5 A19=6 PH0=7 FDCCS=8 ROM=9 GND=10 CS1=11 EXTREG=12
 FLOPLED=13 EXPAND=14 ROMEN=15 NC=16 CARTEX=17 CSHI=18 CSLO=19 VCC=20

equations

```

/CSLO = /A7 * /A5 * /CS1
CSLO.oe = vcc
/CSHI = /A7 * A5 * /CS1
CSHI.oe = vcc
/ROMEN = A17 * /A18 * /A19 * PH0
        + /ROM
ROMEN.oe = vcc
/EXPAND = A17 * /A18 * /A19
        + /CARTEX
EXPAND.oe = vcc
/FLOPLED = LED
FLOPLED.oe = vcc
/EXTREG = A7 * /CS1
EXTREG.oe = vcc
    
```

Note: These equations were taken from a Revision 2A Elmer chip with a hand-written checksum label that said "\$35A9." These equations were used to generate a new fusemap file which also gave the checksum of "\$35A9" so I believe them to be complete and correct. It is possible that other versions with different checksums exist and they may or may not be compatible with these. Use them at your own risk. Also note that these equations will most likely NOT WORK in a Revision 2B C65.

Commodore 65		
Elmer (PAL16L8)		
Wayne Sander	Rev 2A	Page #7 of 7
	2/17/2014	