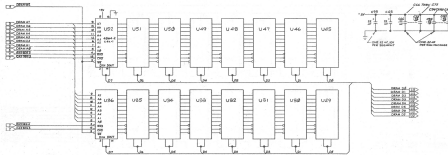


16-BIT SHIFT REGISTER WITH 16-BIT OUTPUT BUS

|         |      |    |          |
|---------|------|----|----------|
| REV. 01 | DATE | BY | APPROVED |
|         |      |    |          |



NOTE: PIN NUMBERS FOR  
4294-2 ARE TYPICAL.

CONNECTION  
SUBJECTS 3-4

CRANK, FIG 2-4

|                     |   |                       |
|---------------------|---|-----------------------|
|                     | DATE: 01/15/10<br>BY: J. CRANK<br>APPROVED: | APPROVED BY:<br>DATE: |
|                     | TITLE:                                      | PROJECT:              |
| PART NUMBER: 4294-2 |   | QUANTITY:             |
| DRAWN BY: J. CRANK  |   | CHECKED BY:           |

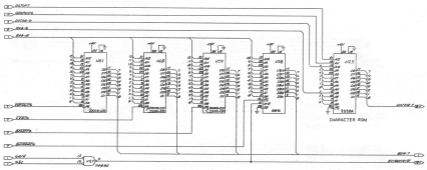
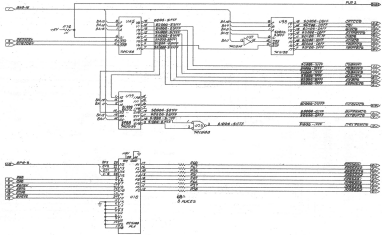
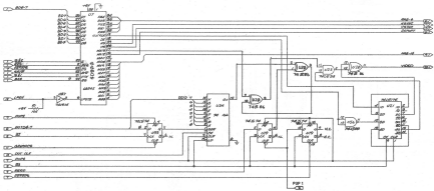


FIG. 10-10. 4-BIT PARALLEL ADDER

|                      |             |             |
|----------------------|-------------|-------------|
| DESIGN               | DATE        | REVISION    |
| 10-10-74             | 1           |             |
| BY                   | CHKD        | APPROVED    |
| W. J. BROWN          | W. J. BROWN | W. J. BROWN |
| TITLE                |             |             |
| 4-BIT PARALLEL ADDER |             |             |
| PROJECT              |             |             |
| NEW YORK 1           |             |             |

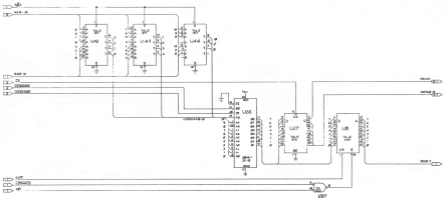




OPTICAL UNIT ASS.

|  |     |             |
|--|-----|-------------|
| DATE   | REV | DESCRIPTION |
| 11/1/68  | 001 | REVISED     |
| DRAWN BY: [Signature]<br>CHECKED BY: [Signature]<br>APPROVED BY: [Signature] |     |             |

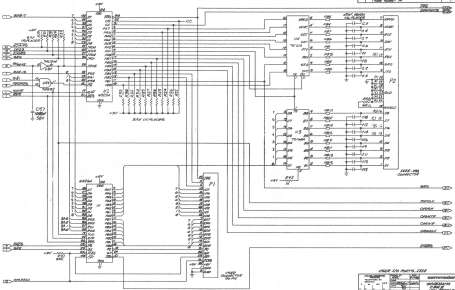




VIDEO RAM ADDRESS MUX, LATCH

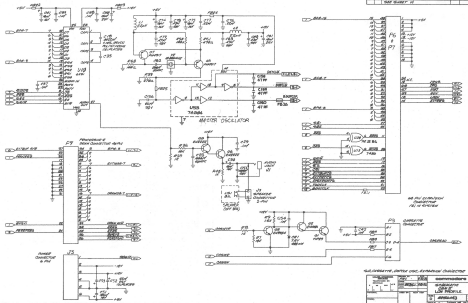
|     |                       |         |
|-----|-----------------------|---------|
| REV | DESCRIPTION           | DATE    |
| 1   | FOR BIDDING BY PART 1 | 10/1/80 |





DATE 26 APRIL 1968

|             |      |             |
|-------------|------|-------------|
| DESIGNED BY | DATE | APPROVED BY |
| CHECKED BY  | DATE |             |
| DRAWN BY    |      | DATE        |
| TITLE       |      | PROJECT NO. |
| CIRCUIT NO. |      | REV. NO.    |
| DESIGNED BY |      | DATE        |
| CHECKED BY  |      | DATE        |
| DRAWN BY    |      | DATE        |
| TITLE       |      | PROJECT NO. |
| CIRCUIT NO. |      | REV. NO.    |



See all components  
 in the enclosure  
 for details

Multi-line drawing, showing part, dimension, description

|           |   |               |
|-----------|---|---------------|
| Part No.  | 240V  | Motor Control |
| Quantity  | 1   |               |
| Material  | Steel   |               |
| Finish    | Paint   |               |
| Weight    | 10 lbs  |               |
| Volume    | 10 cu in  |               |
| Price     | \$100.00  |               |
| Lead Time | 1 week  |               |
| Notes     | See all components in the enclosure for details |               |



